



The First Epistle

Worship, Serve, Grow

February 2024



Newsletter of the First Presbyterian Church
510 W. Ottawa St., Lansing, MI 48933
Office phone: 517-482-0668

Sunday Worship: 10:00 a.m.
Website: <http://lansingfirstpres.com>

Office hours: 8:00 a.m. – 12:00 p.m. & 1:00 – 4:00 p.m.

Facebook: <https://www.facebook.com/LansingFirstPresbyterian>

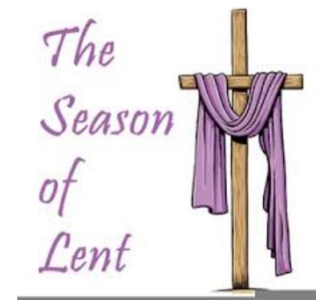


COMMUNION WILL BE SERVED ON FEBRUARY 4th

WORSHIP COMMITTEE

February is the month of commemoration and reflection.

- On **Sunday, February 11**, we remember the **Transfiguration of Jesus** on the mountain with Elijah and Moses. Since this act by Jesus was a holy revelation, we will have white paraments in the front of the room.
- On **Wednesday, February 14, at 7:00 p.m.**, we will hold our traditional **Ash Wednesday service** in the sanctuary, and we will switch to purple paraments. Purple is to remind us to think about the sacrifice Jesus made for us and our response to the grace God gives us, and, as in Advent, the waiting for the sacrifice to be accomplished and Jesus to rise from death.
- **Lent begins with Ash Wednesday through to Good Friday, March 29.**
- We will mark the **Sundays in Lent with our Lenten candle ceremony.**
- On **Palm Sunday, March 24**, we will have a **play featuring Mary the Mother of Jesus' possible perspective on Holy Week events.** Other Holy Week events are being planned and more details will be forthcoming in the March Epistle. Just a heads up – **Easter is MARCH 31!**



CHURCH-WIDE TALENT SHOW!

We hope to see you YOU at our Church-Wide Talent Show, **SATURDAY, FEBRUARY 10TH**
from 2:00 - 4:00 p.m. SNACKS! LAUGHS! FUN!

- If you would like to offer your talent - see Megan Higle (Music Director)
- If you would like to bring a snack to share - see Pam Blair (Membership) or Alyse Collins (Deacons)

Adult Forum	6
Bible Study	3
Birthdays	16
Book Group	7-8
Boomers & Beyond	14
Choir Chairs	15
Church Calendar	17-18
Church Family	16
Church Staff	8
Deacons Notes	9-10
Faith Formation	11
Flower Calendar	4
Israel-Palestine Conflict	5
Lenten Activities/Worship	1
Mission Notes	13-14
Music Notes	4
Pastor's Corner	2-3
Prayer for Healing	16
Session Notes	8
Talent Show	1
TLC	14
Volunteers Needed	15
Youth News and Events	12



This year Ash Wednesday, which marks the beginning of the season of Lent, falls on February 14th, which is also Valentine's Day. It is God's peculiar "valentine" to a broken world. What follows is an excerpt from The PCUSA's Companion to the Book of Common Worship, written by Peter C. Bower, and published in 1993. It provides a wonderful introduction to the beginning of our Lenten journey:

The Lenten journey from the ashes of death to the resurrected life begins on the first day of Lent, Ash Wednesday, which signifies a time to turn around, to change directions, to repent. This first day of Lent reminds us that unless we are willing to die to our old selves, we cannot be raised to new life with Christ. The first step of this journey calls us to acknowledge and confront our mortality, individually and corporately. In many traditions, this is symbolized

through the imposition of ashes—placing a cross of ashes on one's forehead. During the imposition of ashes, the words: "You are dust, and to dust you shall return" (Genesis 3:19) are repeated again and again. We are to remember that we are but temporary creatures, always on the edge of death. On Ash Wednesday, we begin our Lenten trek through the desert toward Easter.

Ashes on the forehead is a sign of our humanity and a reminder of our mortality. Lent is not a matter of being good, and wearing ashes is not to show off one's faith. The ashes are a reminder to us and our communities of our finite creatureliness. The ashes we wear on our Lenten journey symbolize the dust and broken debris of our lives as well as the reality that eventually each of us will die. Trusting in the "accomplished fact" of Christ's resurrection, however, we listen for the word of God in the time-honored stories of the churches Lenten journey. We follow Jesus into the wilderness, resist temptation, fast, and proceed "on the way" to Jerusalem, and the cross. Our Lenten journey is one of *metanoia* ("turning around"), of changing directions from self-serving toward the self-giving way of the cross.

What we hear during Lent is the power and possibility of the paschal mystery, and that the way of the cross, the way to Easter, is through death. To appropriate the new life

that is beyond the power of death means we must die with Christ who was raised for us. To live for Christ, we must die with him. New life requires a daily surrendering of the old life, letting go of the present order, so that we may embrace the new humanity. “I die every day!” asserts Paul (1 Corinthians 15:31). Resurrection necessitates death as a preceding act. The church’s peculiar Lenten claim is that in dying we live, that all who are baptized into Christ are baptized into his death. To be raised with Christ means one must also die with Christ. In order to embrace the resurrection, we must experience the passion of Jesus. The way of the cross, the way to Easter is through death of the “old self.” In dying, we live.

Therefore, at the beginning of Lent, we are reminded that our possessions, our rulers, our empires, our projects, our families, and even our lives do not last forever. “You are dust, and to dust you shall return” (Genesis 3:19). The liturgies throughout Lent try to pry loose our fingers, one by one, from presumed securities and plunge us into unknown baptismal waters, waters that turn out to be not only our death tomb, but surprisingly our womb of life. Rather than falling back into nothingness, we fall back on everlasting arms. Death? How can we fear what we have already undergone in baptism?

It is the power of the resurrection on the horizon ahead that draws us in repentance toward the cross and tomb. Through the intervention of God’s gracious resurrection, lifelong changes in our values and behavior become possible. By turning from the end of the “old self” in us, Lenten repentance makes it possible for us to affirm joyfully, “Death is no more!” and to aim toward the landscape of the new age. Faithfully adhering to the Lenten journey of “prayer, fasting, and almsgiving” leads to the destination of Easter.



LECTIONARY BIBLE STUDY

Key notes from Bob:

- We continue to meet with Zoom on Wednesday afternoons at 4:30 p.m.
- We will be reading all four lessons for each Sunday, teasing apart the underlying message for each.
- I will then follow up with a live stream event on social media (3 streams) at 6:00 p.m., again reading all four lessons with a short summary of each as well as concentrating on one lesson in particular.
- **We will not be meeting for Ash Wednesday.**

MUSIC NOTES from Megan

“After forty days and forty nights,
Jesus came down from the mountain to invite disciples to follow him.
We, too, hear the question, “Will you come and follow me?”
- From Call to Worship, Vol. 57.1

Walk with us, your church family, during the season of Lent. Let us lift each other up, through prayer and servitude. Let us let go of our preconceived notions and dive headlong into the cleansing waters of our baptism – as we hear, “you are dust and to dust you shall return” (Genesis 3:19) – where we remember to whom we belong.

The journey through Lent opens up into the glorious celebration of Easter – won’t you make this journey with me?

The music staff prays that the music you hear and experience during the month of February is meaningful and edifying on your Lenten Journey.

Hymns for February to include:

#834 Precious Lord, Take My Hand	#662 Christ, Whose Glory Fills the Skies
#377 I Want to Walk as a Child of the Light	#783 When We Are Tested
#729 Lord, I Want to Be a Christian	#39 Great Is Thy Faithfulness

Choral Anthems in February to include:

“How Can I Keep from Singing?” arr Gweneth Walker
“Anthem for Transfiguration” arr Paul Hofreiter
“Lord Who Throughout These Forty Days” arr Zebulon Highben
“Light of the World” by Karen Marolli
“I Want Jesus to Walk with Me” arr Hal Hopson

FLOWER CALENDAR NEWS

Due to decreasing interest in purchasing fresh flower arrangements for our table in front of the Sanctuary, the Worship Committee will no longer post the flower calendar. If you would like to purchase fresh flowers for Worship, please call Judy Whitman at 517-290-2350 and leave a check with Betsy in the office for \$50.00. If you would like to supply a silk arrangement, the cost is \$80 and can be split by two or more family units. Please call Judy for more information. In the spring and summer, if you have flowers from your yard you would like to provide, please let Judy know ahead of time. We welcome flowers from local growers, especially if that grower is you!



PC(USA) General Assembly's Ongoing Engagement in the Israel-Palestine Conflict



The Presbyterian Church (USA) unwaveringly supports the rights of Palestinians to live freely in their land without occupation, aggression, or bloodshed. Simultaneously, the church upholds Israel's right to exist as a free and sovereign nation. Recognizing the significant damage caused by Hamas to Israeli towns and the devastating impact of Israeli bombings on Gaza, including the loss of shelter, adequate food, water, and necessities, the church calls for urgent action. In the face of the crisis, the Presbyterian Church (USA) urges the Israeli government to extend the same freedom to the Palestinian people that they afford

to their own citizens. The church also calls upon Hamas to release hostages and refrain from further violence. Emphasizing the universal unacceptability of the atrocities of war, the church highlights the importance of upholding human rights, irrespective of differing perspectives.

PC(USA) has developed a wealth of resources, policies, and historical perspectives to aid individuals, churches, and mid-councils in understanding and reflecting on the Israel-Palestine conflict. These tools are meant to guide prayerful consideration and provide a framework for comprehending the nuances of the situation.

While acknowledging the power of prayer, the Presbyterian response to the escalating violence in Israel and Palestine emphasizes the need for tangible humanitarian assistance and support for partners in the region. This support encompasses crucial interventions such as medical supplies, shelter, water, sanitation, hygiene, food, non-food items, and essential psychosocial support for individuals affected by the conflict. Presbyterian Disaster Assistance is at the forefront of crisis response and recovery efforts in Palestine. Support [Presbyterian Disaster Assistance's](#) crisis response and recovery efforts in Israel/Palestine [here](#).

ADULT FORUM

(11:30-12:30 in Litten Hall downstairs or on zoom).

FEBRUARY 4

JUSTICE LEAGUE OF GREATER LANSING: AN UPDATE

Led by Elder Willye Bryan

An update on the JLGL activities and a report on the second installment of our church's financial commitment

FEBRUARY 11

AFRICAN AMERICAN HISTORY MONTH PRESENTATION

Led by Dr. Nakia Parker

Today to commemorate African American History Month, we will have **Dr. Nakia Parker**, as our guest presenter. Dr. Parker will share on *Reconstruction: The End of Slavery and the Search for Family, Political Gains, and Social Status*.

Dr. Nakia Parker is an Assistant Professor in the History Department at Michigan State University. She is a historian of nineteenth-century U.S. slavery, African American, American Indian history, Women's and Gender Studies, and Black Life in the U.S. West. She is currently working on her book manuscript, *Trails of Tears and Freedom: Black Life in Indian Slave Country, 1830-1866* which examines the lives of enslaved and self-liberated individuals of African and Afro-Native descent in Choctaw and Chickasaw communities in nineteenth-century Indian Territory (present-day Oklahoma).

Please join us for a great presentation and some stimulating follow-up discussion led by **Elder Willye Bryan**

FEBRUARY 18

Led by Rev. Stan Jenkins

HISTORY OF THE CONFLICT IN THE MIDDLE EAST

FEBRUARY 25

Our 4-week Adult Forum Lenten Bible Study begins today!

"INHERITING THE KINGDOM"

Led by Ann Harvey

More information will be coming soon.



Book Group

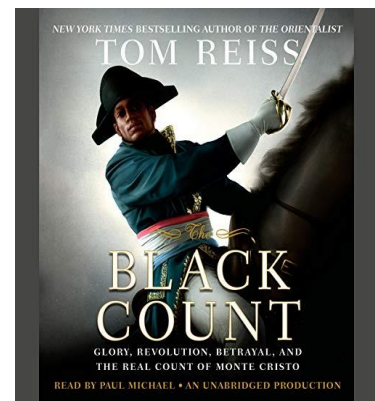


We will return to meeting on Zoom until next summer. The Zoom link will be sent to the names on the Book Group email list. Please let Pat Eenigenburg know if you would like to be added to the list (eenigenburg@hotmail.com).

Tuesday February 6, 7:00 p.m. on Zoom

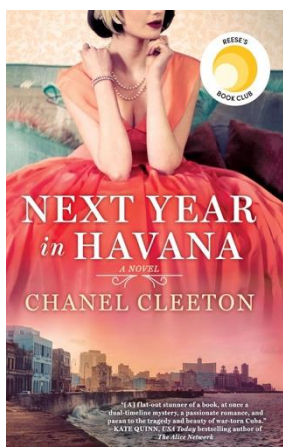
***The Black Count: Glory, Revolution, Betrayal, and the Real Count of Monte Cristo* by Tom Reiss**

General Alex Dumas is a man almost unknown today, yet his story is strikingly familiar—because his son, the novelist Alexandre Dumas, used his larger-than-life feats as inspiration for such classics as *The Count of Monte Cristo* and *The Three Musketeers*. But, hidden behind General Duma’s swashbuckling adventures was an even more incredible secret: he was the son of a black slave—who rose higher in the white world of France than any man of his race prior to current times. *The Black Count* is simultaneously a riveting adventure story and a window into the modern world’s first multi-racial society. But it is also a heartbreaking story of the enduring bonds of love between a father and son. Discussion led by Del Rector.



Tuesday March 5, 7:00 on Zoom

***Next Year in Havana* by Chanel Cleeton**



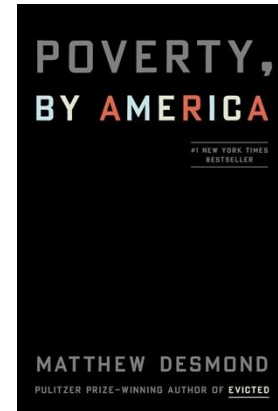
Havana, 1958. The daughter of a sugar baron, nineteen-year-old Elisa Perez is part of Cuba's high society, where she is largely sheltered from the country's growing political unrest—until she embarks on a clandestine affair with a passionate revolutionary... *Miami, 2017.* Freelance writer Marisol Ferrera grew up hearing romantic stories of Cuba from her late grandmother Elisa, who was forced to flee with her family during the revolution. Elisa's last wish was for Marisol to scatter her ashes in the country of her birth. Arriving in Havana, more family history comes to light and Marisol finds herself attracted to a man with secrets of his own. Discussion led by Pat Eenigenburg.

Tuesday April 2, 7:00 in the parlor

Poverty, by America by Matthew Desmond (all-church read)

The United States, the richest country on earth, has more poverty than any other advanced democracy. Why? Why does this land of plenty allow one in every eight of its children to go without basic necessities, permit scores of its citizens to live and die on the streets, and authorize its corporations to pay poverty wages?

Elegantly written and fiercely argued, this compassionate book gives us new ways of thinking about a morally urgent problem. It also helps us imagine solutions. Desmond builds a startlingly original and ambitious case for ending poverty. He calls on us all to become poverty abolitionists, engaged in a politics of collective belonging to usher in a new age of shared prosperity and, at last, true freedom. Discussion led by George Bennett.



SESSION NOTES

The Session met for leadership training by Rev. Jenkins and dinner prior to the regular Session meeting on Wednesday, January 17.

The financial report for 2023 shows a deficit of about \$11,000 after receiving contributions to reduce the deficit, reduction in spending and increased revenues for use of the building and parking lot. The budget for 2024 was discussed and will be voted on at the February Session meeting to have it ready for the Congregational Meeting on March 10, 2024. There are no increases in the budget. The church van is being sold. On Sunday February 4 in Adult Forum, The Justice League of Greater Lansing will be presented with a check for \$40,303.18 as part of the church pledge for restorative justice.

Rev Jenkins reported that a gun violence summit will be held on April 13 with the Okemos Presbyterian Church at Kingdom Ministries Church.

Respectfully submitted: Carol Wallace, Clerk of Session

FIRST CHURCH STAFF

Pastor: Rev. Stanley Jenkins

Parish Associate: Rev. Charles Herrick

Pastoral Care Assistant: Christine DeYonke

Church Administrator: Betsy Calvert

Director of Congregational Life &

Outreach: Prince Solace

Director of Christian Education &

Youth Ministry: Megan Higle

Part-time Custodian: Kliff Nhengu

Director of Music: Megan Higle

Organist: Sergei Kvitko

Bell Choir Director: Darin Showalter

Child Care Staff: Lily Ferris

Video Producers: Bill Collins and
Andrew Mackoul

DEACONS NOTES

ADVENT HOUSE MEALS



A delicious hot meal was served to the Advent House community on January 28. The **next Advent House meal will be served on March 24**. If you would like to help with this (preparing or serving it), please contact Rich Blankenship, gogreen3426@yahoo.com.

CAMP GREENWOOD

A new year means a new summer season at Camp Greenwood! Start thinking now about Summer Camp Registration and take advantage of the **February early bird discount**. Registration opened January 1 for all summer sessions and spring events. To register, to apply for a Camp Greenwood scholarship, or for more information, visit the [Camp Greenwood website](#) and click on the “Summer Camp” icon.



FOOD PANTRY

The need for our Food Pantry ministry continues, year-round. The Food Pantry is always in need of basic food items and monetary donations. Contact Jim Donaldson for more details: jimdonaldsn01@comcast.net. Basic items the pantry can use include:

- Jelly (grape or strawberry)
- Cans of baked beans
- Any type of cereal
- Bar soap
- Toothpaste, dish soap
- Canned peaches/mixed fruit
- Laundry detergent
- Saltine crackers
- Canned green beans, corn, and peas
- Elbow macaroni
- All varieties of canned soup
- Store bought cookies
- Toilet paper
- Pasta sauce
- Baking mix



MEMBER CARE

Deacon “buddies” visit and/or contact our homebound members regularly, representing our entire church, and showing the constant love of our Christian family of faith.

Can you help with an occasional ride to church for those who cannot attend without



transportation? If you’re willing to help our **Rides to Church**, or if you know someone who would appreciate having a **Deacon Buddy**, please contact Bessie Roper at 517-803-3640, or email: bessieroper@gmail.com

ANGEL TEAM MINISTRY



The Angel Team offers rides, meals, and other support for church members in both joyous and difficult times. If you are interested in assisting your friends and church members, or have need of such support, please contact Deb Donaldson: iampib@yahoo.com. Thank you for your kindness in supporting this ministry!

BINGO MINISTRY AT CAPITAL CITY APARTMENTS ON SOUTH WASHINGTON APARTMENTS RETURNS!



Join Linda Snyder and James Pyle in providing this entertaining outreach and fellowship to the residents at 3200 S. Washington Blvd on the third Tuesday of the month at 7:00 p.m. You can participate by volunteering onsite, or you can support the fun by donating prizes! Bring your donations to the church office, marked "Bingo prizes." Prize items that are always appreciated include:

- Personal care items (hand soap, lotions, toothpaste, toilet paper, paper towels)
- Cleaning supplies (dish & laundry soap)
- Granola bars and other snack foods
- \$25 gift cards from Meijer/Kroger (grand prize)

Contact Linda Snyder at lksnyder3@comcast.net with your questions or to volunteer!
Thank you!

HOW TO PROVIDE FINANCIAL SUPPORT FOR THE MINISTRY OF THE DEACONS

The ministry of your Board of Deacons depends upon extra-mile giving (not part of your annual pledge) by our generous congregation! You can help us serve with your financial donations to the Deacons Fund! To support Member Care, Bingo Outreach, Advent House meals, and Angel Team ministries, put "Deacons General Fund" on the memo line of your check. To support our Food Pantry ministry or our Holiday Basket ministries, please indicate the desired recipient. (Donations to the Deacons without a specific designation go into the Deacons General Fund.) You can also donate from our church website, <https://www.lansingfirstpres.com/>. Click the Donate Here button on the main page, then look for the Deacons Emergency Fund. *Thank you for your support!*



The March newsletter deadline is February 15th.
Please send articles to Victoria Fitton: vafitton@gmail.com

Faith Formation at First Presbyterian Church

Here is what is going on this month for Faith Formation!



CHILDREN and YOUTH

Elementary Age Children – 4 years to 12 years!

We will explore many stories in the Old Testament during February.

Youth (Middle and Senior High)!

Our Middle and Senior High Faith Formation group continues our fellowship with Holt and Okemos Presbyterian churches. These groups come together every Sunday evening. We are so glad that our young people have ways to share their faith with others in our larger community!

If you have a student in grades 6 – 12, see Megan Higle or Pam Blair to find out what opportunities exist. ☺

Once per month we will have our Church-Wide Fellowship where YOU are NEEDED!

February – Talent Show! – Saturday, February 10

March – Easter Egg Hunt – Sunday, March 24

Weekly emails come from Holt Presbyterian, if YOU want to receive these weekly email updates, please let Megan or Pam know!



If Youth Group is not “your thing,” please see Megan Higle or Ann Harvey for schedule of youth Bible Study and opportunities for service within our congregation.

SUNDAY FAITH FORMATION SCHEDULE (roughly)

11:30 a.m. - Noon – School House Learners in Faith Formation Classroom with snack, Bible story, craft and reading time.

*Childcare can be available until 1:00 p.m. Please speak with Lily in the childcare room beforehand.

FAITH FORMATION DETAILS

Our Elementary Age Learners will learn about how we know God, through Jesus is part our everyday lives/homes/actions.

Date	Title of Lesson/Growing in God’s Love
February 4	God is With Us “You Are Not Alone” p. 146
February 11	Take Care “Elisha the Healer” p. 140
February 18	God Surrounding Us “How Close is God?” p. 174
February 25	Feel at Home “Abram and Sarai Find a New Home” p. 26

Megan Higle; mhigle@lansingfirstpres.org; office phone: 517-482-0668 x. 14

YOUTH NEWS AND EVENTS

FPC-HOLT & LANSING YOUTH EVENTS



2024



SUNDAY, JANUARY 28

Registration Deadline for 2/23-2/25 MHYC Winter Retreat
- follow the QR code!



6:00-7:30 PM - Both Groups

"Planning and Fanning (Detroit Lions Style)
We'll watch the game while we plan upcoming activities.
Bring your favorite tailgate food to share!

SUNDAY, FEBRUARY 4 - BOTH GROUPS

Registration deadline for 2/11 Trip to The Wright!



9:30AM -12:15PM

Souper Bowl of Caring!

MHYC vs. YIA! Bring your best crock of soup.
Congregation votes for favorite soup with \$ bills.
Proceeds go to winner...the Holt Community Food Bank!

SUNDAY, FEBRUARY 11 - BOTH GROUPS

12 noon - 6:00 PM

"Road Trip to The Wright"
We'll travel to the Charles H. Wright Museum
of African American History in Detroit.

Must register by 2/4!



MISSION NOTES



A Fair Trade Valentine's Day!!

Valentine's Day is a fun time to show love for your community, the environment and the farmers who grow our food. Equal Exchange chocolate and coffee make great gifts. Available in Litten Hall February 4 and 11.

What is Two-Cents-a-Meal or Cents-Ability?

A strategy for raising awareness — and funds — for the fight against hunger.



Cents-Ability is a small first step in the battle against hunger and poverty. Congregations invite every member — of all ages — to contribute a few cents at every meal. This simple act is an expression of thanks for what we have received. It is also a commitment to share with others in response to Jesus' command, "You give them something to eat." When members bring their offerings to church on the appointed Sunday, all of those coins "make a joyful noise unto the Lord" as they are received and dedicated.

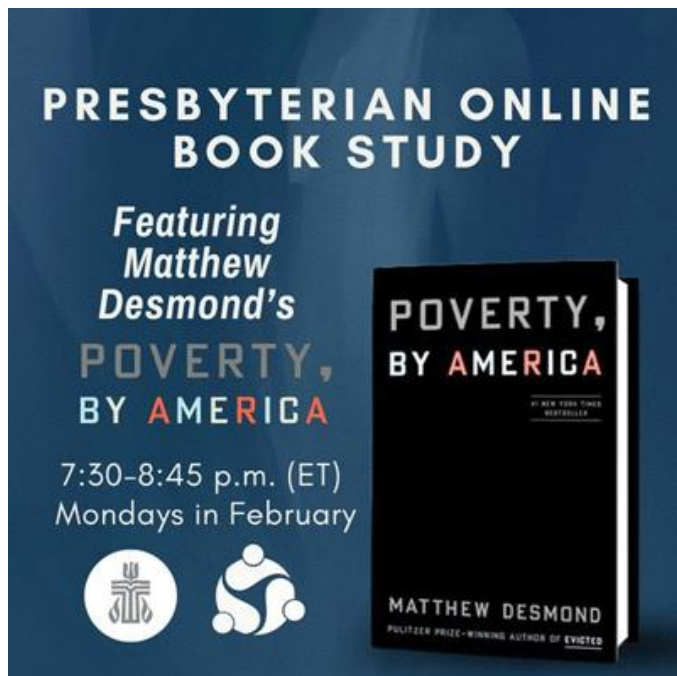
These small acts of faithfulness can add up: One hundred persons in a congregation will contribute \$180 a month at two cents a meal. **(First Presbyterian is collecting less than \$100 a month currently. Do we have folks not eating or just not remembering to bring in their offering?) Please bring your coins on the last Sunday of the month.**

PCUSA online Book Study *Poverty, by America*

This book is available in our library for church book study.

The Presbyterian Church (USA) is launching a four-week book study featuring Pulitzer Prize-winning author Matthew Desmond's book, "Poverty, by America."

The free online study kicks off on February 5, with a guest appearance by author Matthew Desmond. Discussions will cover a few chapters each week at 7:30 p.m. Eastern Time, every Monday in February. Breakout rooms will facilitate smaller discussions on specific topics and personal connections.



Organized by a poverty consulting group comprised of Presbyterian national staff, mid council staff, volunteers, and dedicated Presbyterians, the study aligns with the PC(USA)'s Matthew 25 invitation, focusing on eradicating systemic poverty. The group emphasizes ecumenical and interfaith collaborations, including involvement in initiatives like the Poor People's Campaign and the Kairos Center, along with international efforts through mission partners and global networks.

Additional resources, including a poverty resource packet and

recordings from last year's online workshop series on poverty, are available to support participants in their engagement with the study. Registration is currently open for those interested in joining this enlightening exploration of poverty and its impact.

[Presbyterian Mission Agency Register for free online PC\(USA\) book study of 'Poverty, by America' | Presbyterian Mission Agency](#)

BOOMERS AND BEYOND –

Wednesday, February 14th at 12:00 p.m. in the Church Parlor

We can all remember the days in elementary school bringing our valentine cards to school to exchange with others. It was fun and exciting to see the various cards. Our Boomers and Beyond group may be past that activity but we can just come and enjoy the conversation and company of the group because we are young at heart! Mark your calendars for February 14th at noon in the parlor.

TLC –

Thursday, February 15th at 1:00 p.m.

TLC will meet on Thursday, February 15th at 1:00 p.m. This month we will be going to Smokey Bones Bar & Fire Grill. It is located at 2401 Lake Lansing Road (in Eastwood Towne Center) in Lansing. Please call Judy Hartgerink (517-484-5177) for reservations or information. TLC is a group for women in the church who enjoy fellowship and good food. We would love to have you join us.

VOLUNTEERS NEEDED

Are you handy with tools and willing to be called as a first line for church maintenance issues?

First Pres has always relied on capable members to help with things that need doing. With rising costs and budget issues, and because our new administrator isn't familiar with everyone who has helped in the past, we want to compile a list of people who are willing to be called first in case of minor building maintenance issues.



Many things come up that can't be readily addressed by our part-time custodian, but don't need to be handled by a licensed contractor (things like loose trim work, door latches or closers that need adjustment, minor lights, and mechanical issues, etc.)

More major issues will still be referred to licensed contractors as needed, but with contractors becoming more expensive and increasingly difficult to schedule, this is an opportunity for members who are handy to apply their talents in stewardship of our church. If you would like to be included on the list, please contact Betsy Calvert in the church office, or Bill Collins.

OPPORTUNITY FOR THE CHURCH CHOIR

The choir has an AMAZING opportunity offered to them to replace our 40-year-old choir/musician chairs at an amazing price!



NEW chairs, similar to the ones in the choir room and used by guest musicians (including the Lansing Symphony), cost approximately \$150 - \$330 PER CHAIR.

We can purchase a set (40 of them) of gently used musician chairs for only \$20 each! That's right, a total of \$800 we can make an amazing upgrade. (That is a savings of \$5,200 - \$12,400!!)

Many of our choir members have donated funds for this purchase, if YOU would like to help offset the cost of these chairs, please consider making a donation in your next offering. (Please make a note in the memo for MUSIC CHAIRS).

Thank you for your continued support!

CHURCH FAMILY

CONCERNS OF THE CONGREGATION:

In care facilities:

Jean Dietrich (Story Point of Grand Ledge)

Dianne Rector (Rosewood Manor in DeWitt)



A PRAYER FOR GOD'S HEALING

Heavenly Father, we lift up all those in our congregation, our families, our friends, and in our world who are facing illnesses and uncertainties. We ask that You give them the hope and courage they need today and every day. Comfort their pain, calm their fears, and surround them with Your peace. And may the Holy Spirit move in all of us to help meet the needs of those around us struggling with ill health. Amen

FEBRUARY BIRTHDAYS

2/02	George Bennett	2/12	Raven Smith
2/02	Ruth Brunet	2/14	Haley Drake
2/02	Pamela Davies	2/16	Kat English
2/03	Patrick Affholter	2/16	Lauren Snyder
2/04	Philip Luckhurst	2/17	David Snyder
2/04	Avery Wisner	2/19	LeeAnn Lorencen
2/04	Bry Powers	2/19	David Viele
2/05	Anna Harvey	2/20	Jackie Poland
2/06	Jennifer Amabo	2/22	Katie Pettit
2/07	Brenda Poland	2/22	Gartha Angus
2/08	Howard Powers	2/22	Ceci Anderson
2/09	Verd Rumfield	2/24	Jean Dietrich
2/09	Jane Collins	2/25	Elizabeth Amabo
2/09	Roger Rochowiak	2/26	Jacob Summerfield
2/11	Rachel Showalter	2/26	Aaron Bales



We truly want to wish everyone a Happy Birthday and we make every attempt to include every birthday in the Epistle and send a birthday card to each person. If you see we missed someone, please contact the church office of the mistake.

FEBRUARY CHURCH CALENDAR

<p>Thursday, February 1 9:00 a.m.-2:00 p.m. GIL Classes 5:00-8:00 p.m. NWI Cooking Demo 7:00 p.m. Chancel Choir - Choir 7:00 p.m. Victory in Jesus Bible Std</p> <p>Friday, February 2 5:30-6:30 p.m. Yoga – Yoga Room</p> <p>Sunday, February 4 10:00 a.m. Morning Worship 11:30 a.m. Adult Forum 11:30 a.m. Children’s Faith Formatn 12:30-2:00 p.m. Victory in Jesus Ministries</p> <p>Monday, February 5 9:00 a.m.-2:00 p.m. GIL Classes 9:00 a.m.-4:00 p.m. AARP Tax Assist 10:00 a.m. Staff Meeting 5:30-6:30 p.m. Yoga – Yoga Room 6:30 p.m. Bells of First - Choir 7:00 p.m. Membership Committee</p> <p>Tuesday, February 6 9:00 a.m.-2:00 p.m. GIL Classes 9:00 a.m.-4:00 p.m. AARP Tax Assist 7:00-8:30 p.m. Book Group - Parlor 7:00 p.m. Capital City Chordsmen</p> <p>Wednesday, February 7 9:00 a.m.-2:00 p.m. GIL Classes 4:30-6:30 p.m. Lansing Children’s Choir 4:30 p.m. Lectionary Bible - Zoom 5:00 p.m. Open Spot Theatre 5:30-6:30 p.m. Yoga – Yoga Room 6:00 p.m. Mid MI Photo Mtg 6:30 p.m. Mission Committee Mtg</p> <p>Thursday, February 8 9:00 a.m.-2:00 p.m. GIL Classes 10:00 a.m.-3:00 p.m. NWI Food Distribution 5:00 p.m. Mayor’s Budget Night 7:00 p.m. Chancel Choir 7:00 p.m. Victory in Jesus Ministries</p> <p>Friday, February 9 5:30-6:30 p.m. Yoga – Yoga Room</p> <p>Saturday, February 10 2:00 p.m. Talent Show - Litten</p> <p>Sunday, February 11 10:00 a.m. Morning Worship 11:30 a.m. Adult Forum 11:30 a.m. Children’s Faith Formatn 11:30 a.m. Finance Committee 12:30 p.m. Victory in Jesus Ministries</p>	<p>Monday, February 12 9:00 a.m.-2:00 p.m. GIL Classes 9:00 a.m.-4:00 p.m. AARP Tax Assist 10:00 a.m. Staff Meeting 5:30-6:30 p.m. Yoga – Yoga Room 6:30 p.m. Bells of First – Choir</p> <p>Tuesday, February 13 9:00 a.m.-2:00 p.m. GIL Classes 12:00 p.m. Lunch – Litten 2:30 p.m. Building & Grounds Mtg 5:30 p.m. Worship Committee Mtg 6:00 p.m. Mid MI Photo Officers 6:30-9:00 p.m. Glen Erin Pipe Band 7:00 p.m. Capital City Chordsmen</p> <p>Wednesday, February 14 9:00 a.m.-2:00 p.m. GIL Classes 9:00 a.m.-4:00 p.m. AARP Tax Assist 12:00 p.m. Boomers & Beyond 4:30 p.m. Lectionary Bible Study 5:00 p.m. Open Spot Theatre 5:30-6:30 p.m. Yoga – Yoga Room 7:00 p.m. Ash Wednesday Service</p> <p>Thursday, February 15 9:00 a.m.-2:00 p.m. GIL Classes 10:00 a.m.-3:00 p.m. NWI Food distribution 5:00-8:00 p.m. NWI Cooking Demo 6:00-8:00 p.m. GL Quilt Guild Meeting 7:00 p.m. Chancel Choir – Choir 7:00 p.m. Victory in Jesus Ministries Bible Study – Library</p> <p>Friday, February 16 5:30-6:30 p.m. Yoga – Yoga Room</p> <p>Sunday, February 18 10:00 a.m. Morning Worship 11:30 a.m. Adult Forum 11:30 a.m. Children’s Faith Formatn 12:30 p.m. Victory in Jesus Ministries</p> <p>Monday, February 19 9:00 a.m.-2:00 p.m. GIL Classes 9:00 a.m.-4:00 p.m. AARP Tax Assist 10:00 a.m. Staff Meeting 5:30-6:30 p.m. Yoga – Yoga Room 6:00-9:00 p.m. GIL Classes 6:30 p.m. Bells of First – Choir</p> <p>Tuesday, February 20 9:00 a.m.-2:00 p.m. GIL Classes 9:00 a.m.-4:00 p.m. AARP Tax Assist 6:30-9:00 p.m. Glen Erin Pipe Band 7:00 p.m. Capital City Chordsmen</p>
---	--

<p>Wednesday, February 21 9:00 a.m.-2:00 p.m. GIL Classes 4:30 p.m. Lectionary Bible – Zoom 4:30-6:40 p.m. Lansing Children’s Choir 5:00 p.m. Open Spot Theatre 5:30-6:30 p.m. Yoga – Yoga Room 7:00 p.m. Session Meeting</p> <p>Thursday, February 22 9:00 a.m.-2:00 p.m. GIL Classes 9:00 a.m.-2:00 p.m. NWI Food Distribution 1:00 p.m. Bridge in the Parlor 6:00-8:00 p.m. GL Quilt Guild Meeting 7:00 p.m. Chancel Choir 7:00 p.m. Victory in Jesus Ministries Bible Study – Library</p> <p>Friday, February 23 9:00 a.m.-3 p.m. Secretary of State 5:30-6:30 p.m. Yoga – Yoga Room</p> <p>Sunday, February 25 10:00 a.m. Morning Worship-Chapel 11:30 a.m. Adult Forum 11:30 a.m. Children’s Faith Formatn 12:30 p.m. Victory in Jesus Ministries 7:00 p.m. Victory in Jesus Ministries Bible Study – Library</p>	<p>Monday, February 26 9:00 a.m.-2:00 p.m. GIL Classes 9:00 a.m.-4:00 p.m. AARP Tax Assist 10:00 a.m. Staff Meeting 5:30-6:30 p.m. Yoga – Yoga Room 6:30 p.m. Bells of First – Choir</p> <p>Tuesday, February 27 9:00 a.m.-2:00 p.m. GIL Classes 6:00 a.m. Election Day 6:30-9:00 p.m. Glen Erin Pipe Band 7:00 p.m. Capital City Chordsmen</p> <p>Wednesday, February 28 9:00 a.m.-2:00 p.m. GIL Classes 9:00 a.m.-4:00 p.m. AARP Tax Assist 4:30 p.m. Lectionary Bible – Zoom 4:30-6:40 p.m. Lansing Children’s Choir 5:30-6:30 p.m. Yoga – Yoga Room</p> <p>Thursday, February 29 10:00 a.m.-3 7:00 p.m. NWI Food distribution- Chancel Choir - Choir 7:00 p.m. Victory in Jesus Ministries Bible Study - Library</p>
--	---